

PRESIDON-ML Series

Dual Cylinders Mounting Press



*Perfect Surface.
Always*

ML-L2 series

- User-friendly HMI interface with parameter mode settings, which is easy for operations
- Fully automatic for pressuring, heating, and cooling
- Acrylic powder can be applied for producing a highly transparent specimen with a good edge retention
- Dual cylinders with additional spacers (option) can mount four samples per time
- Hydraulic system with high stability
- Electric heating system for rapid heating
- Suitable for preparing iron, brass, and other non-fragile materials with high temperature and high pressure resistance

Introduction & Features

Dual-Cylinder Design

The ML-L2 mounting press is distinguished by its dual-cylinder design, allowing for the simultaneous mounting of the same size samples or different sizes samples. Applied with a spacer (option), it can mount four samples at once, greatly enhancing mounting efficiency.

HMI Interface

Compensating pressure, heating temperature, cooling temperature, heating time and cooling time can be set.



Easy Operation

One button starts the machine with the function of auto pressure adding, auto heating, and auto cooling, which is easy to be operated by any users.

Adjustable Compensating Pressure

High-temperature resistance but without high-pressure resistance samples can be prepared through a customized program. It increases the flexibility of the preparation.

Cooling Temperature Setting

The cooling temperature can be set from 10 °C to 100 °C according to the requirement. Samples can be taken out earlier than the normal parameter setting. Applied with pre-heat mode, preparation time can be greatly shortened.

Memory Mode

30 sets memory mode can memorize different parameters, which is easy for the users to opt for. Memory mode quantity can be also customized.



Acrylic Powder

Besides the bakelite powder, the acrylic powder can be also used. The acrylic powder can be applied for producing a highly transparent specimen with good edge retention.



Lower Ram with Chamfering Design

A chamfering design can avoid the waste of the damage of SiC paper or polishing cloth during the grinding and polishing process.

Introduction & Features

Inner Cylinder Kit Set (Option)

With different selections of inner cylinder kits for outer cylinder size of Ø40mm or Ø50mm, that can fulfill the needs of different mounting sizes. The inner cylinder adopts rapidly replacement design.

Filter Set

Effectively filter the minerals and impurities in the water, which keeps the water path smooth and prolongs the lifespan of the water valve.

Electric heating device and hydraulic design

An electric heating device can increase the temperature quickly and stably, while a hydraulic pressure compensation design ensures stability as well.

Special Bracket for Handle

Quickly-released design for the handle, which can be put on the special bracket. This will increase space efficiency.



Spacer (option)

With an additional spacer, the user can mount two specimens at the same time, greatly reducing the sample preparation time.

Accessories

Submerged Pump

Order No.	Specification
QWP06002	1Ø-220V-50/60HZ
QWP06002-1	1Ø-200V-50/60HZ

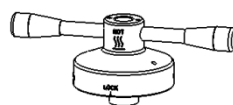


Spacer(Optional)

Size (mm)	Ordering No.	Size (mm)	Ordering No.
Ø25	ML25H0219A	Ø32	ML32H0219A
Ø25.4	ML25.4H0219A	Ø38.1	ML38.1H0219A
Ø30	ML30H0219A	Ø40	ML40H0219A
Ø31.75	ML31.75H0219A	Ø50	ML50H0219A

Inner Cylinder Kit (Option)

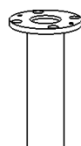
Inner Cylinder Kit (Option)



Top Closure



Spacer



Inner Cylinder

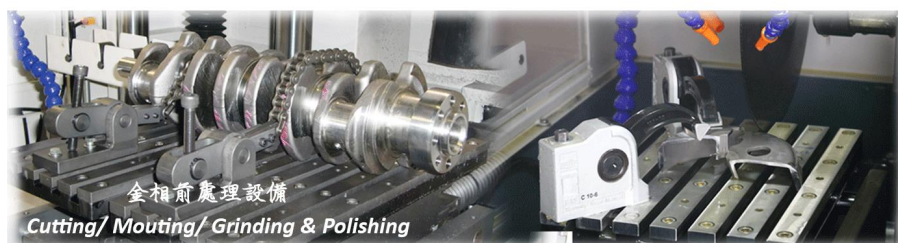


Lower Ram

Ø40mm Cylinder					
Inner Cylinder Kit (Single Mold)	Size (mm)	Ø25	Ø30	Ø32	Ø40
	Order No.	ML40AD0215A	ML40AD0214A	ML40AD0213A	-
Ø50mm Cylinder					
Inner Cylinder Kit (Single Mold)	Size (mm)	Ø25	Ø30	Ø32	Ø40
	Order No.	ML50AD0216A	ML50AD0215A	ML50AD0214A	ML50AD0213A

Note :

1. Cylinder kit for a single mold is including: top closure 1 set, spacer 1pc, inner cylinder 1 pc, and lower ram 1pc.
2. Please contact us for any customization of a special model size.
3. Cylinder size **below** Ø32mm is not able to be installed an inner cylinder kit.



Working Table (Option)



Ordering No.

TF01

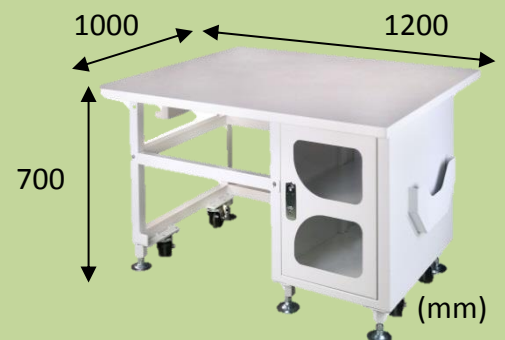
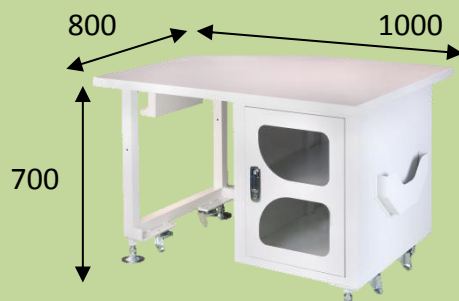
TF02

Size (L*D*H)

1000*800*700 mm

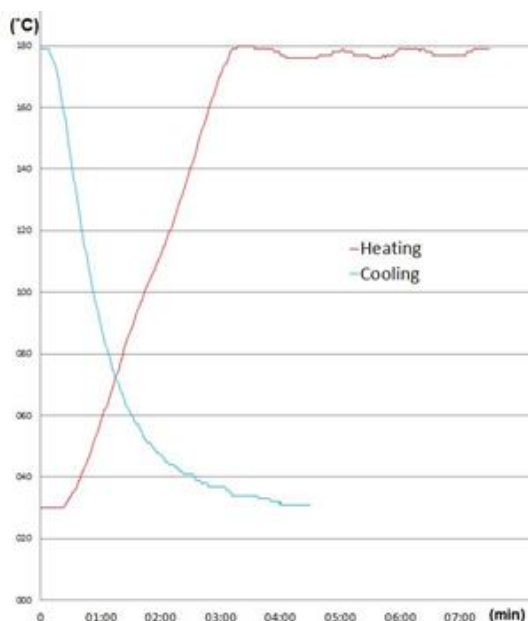
1200*1000*700 mm

Sample



Specifications

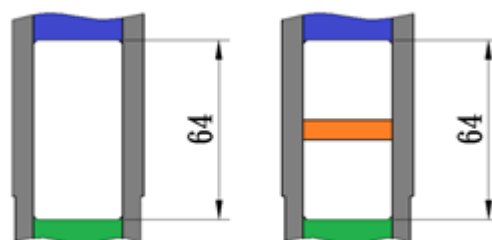
Model	L2							
Sample Size (mm)	ø25	ø25.4	ø30	ø31.75	ø32	ø38.1	ø40	ø50
Sample Quantity	1~4pcs/ per time (Opt for one to two spacers for 3 or 4pcs)							
Spacer (Option)	ø25 (ML25H0219A)		ø31.75 (ML31.75H0219A)		ø40 (ML40H0219A)			
	ø25.4 (ML25.4H0219A)		ø32 (ML32H0219A)		ø50 (ML50H0219A)			
	ø30 (ML30H0219A)		ø38.1(ML38.1H0219A)					
Noise Level (dB)	69~75					70~78		
Heating Power (W)	2400					3200		
Total Power (W)	3200					4000		
Temperature (°C)	50~250 (Special temperature requirements can be customized)							
Cooling Temperature Adjusting Range (°C)	10~100							
Pressure (kg/cm²)	50~350 (711~4978 psi/ 49~343 Bar) For a dia. 50mm cylinder, the pressure can be set to 50~250kg/cm² The mounting powder will also affect the max. pressure.							
Heating Time (s)	1~ 3600 (60min)							
Cooling Time (s)	1~1800 (30min)							
Memory Mode (sets)	30 (Parameter setting: pressure compensation, heating temperature, heating time, cooling temperature and cooling time)							
Machine Dimension WxDxH (mm)	790x680x590							
Machine Weight (kg)	124					125		
Inlet and Outlet Pipe (mm)	10mm low pressure pipe (Inner diameter ø10— Outer diameter ø15)							
Cooling Device	Connect to recirculating water for auto cooling							
Power Supply (V)	AC 220 1ø							
Accessories	Sample Clip 1pc, Funnel 1pc, Spoon1pc, Mounting Powder 1kg (2.2lb), Acrylic Powder 2kg (4.4lb), Filter 1set, Auto Connector 2pcs, Pipe Clip 6pcs, Self-tapping Screw 6pcs							



1. Sample-Ø32mmx20mm (t).
 2. Testing results will be different according to weather condition, materials, sample sizes, and cylinder sizes.
- (The data is for referencing only)

Parameters

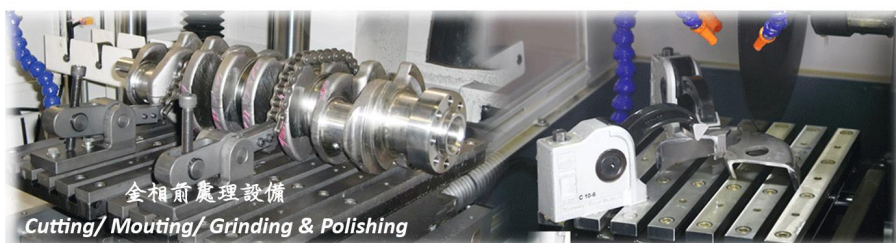
Sample Size (Phonetic Formaldehyde Resin)



Single Mold

Dual Molds

NO.	Mounting size (mm)	Mounting height (mm)	Mounting powder weight (g)	Mold qty.	Mold volume (mm ³)
Single mold	Ø25	21	18	1	10303
	Ø32	21	30	1	16880
	Ø40	21	47	1	26376
	Ø50	21	75	1	41213
Dual molds	Ø25	14	12x2	2	6869
	Ø32	14	22x2	2	11253
	Ø40	14	31x2	2	17584
	Ø50	14	49x2	2	27427



Consumables (Option)



Acrylic Powder

Order No. Thermoplastic, High Transparent and Easy to Observe.
(30g per time)

S030202-1	1 kg
S030202-5	5 kg
S030202-10	10kg

Bakelite Powder (Phenolic Formaldehyde Resin)

Order No. Thermosetting and High hardness.
(30g per time)

S03001-1	Black	1 kg
S03001	Black	25 kg
S03002-1	Brown	1 kg
S03002	Brown	25 kg
S03003-1	Green	1 kg
S03003	Green	25 kg
S03004-1	Red	1 kg
S03004	Red	25 kg

Conductive Bakelite Powder

Order No Thermosetting, and Phenolic formaldehyde resin.
(30g per time)

S030106	Carbon-based	0.45kg
S0301061	Copper-based	0.45kg

Order No.	Specimen Clip	Package (pcs/pack)
S17003	Stainless clip for metal specimen. Able to be employed with hot mounting machines. Size Ø10 x 7 H (mm)	100

Top Tech Distributors



TOP TECH



TOP TECH MACHINES CO.,LTD

No.6-3,Siayuan Rd.,Dali,Taichung,412 Taiwan
Tel +886-4-2406-3799 Fax:+886-4-2406-0960
E-mail: top@toptech.tw <http://www.toptech.tw>

Agent

Top Tech reserves the right to change our products without notice.